

## Astra Schedule Version 7 Common Reporting View Descriptions

View Name	View Description
AccessibleEventsReportView	Used to apply security to events reports. Contains UserId values and corresponding EventID values for all events each user can view in the application.
AccessibleRoomsReportView	Used to apply security to rooms reports. Contains UserId values and corresponding RoomID values for all rooms each user can view in the application.
AccessibleSectionsReportView	Used to apply security to academic sections reports. Contains UserId values and corresponding SubjectID values for all academic subjects each user can view in the application.
CustomerContactsReportView	Contains contact information for event customer contacts. Can be used to supply contact details for events reports.
CustomersReportView	Contains customer information for event customers. Can be used to supply customer details for events reports.
EventMeetingsPrePostReportView	Contains information on setup windows, teardown windows, pre meetings, and post meetings for events.
EventMeetingsReportView	This is the main reporting view for event reports. Contains information on events and event meetings.
InstructorsReportView	Contains detail information for instructors. Can be used to supply instructor information for event reports.
ResourcesReportView	Contains information on the resource inventory.
RoomActivitiesReportView	Based off of the RoomUsage table, this view contains information on academic sections AND events in one view. This view is used to create the "All activities" reports, calendar grids, and any other report that requires information for both sections and events.
RoomFeaturesReportView	Contains information on the room features associated with each room. Can be used to supply feature information to room inventory reports as well as filter event or section reports by rooms that contain certain equipment.
RoomOptBottlenecksReportView	Contains information on bottlenecks created in room optimization sandbox runs.
RoomOptInfeasiblesReportView	Contains information on infeasibles created in room optimization sandbox runs.
RoomOptSchedSectReportView	Contains information on scheduled sections in room optimization sandbox runs.
RoomOptSummaryReportView	Contains summary information on room optimization sandbox runs. Can be used to create comparison reports between multiple sandbox runs.
RoomRegionsReportView	Contains information on the regions associated with each room. Can be used to supply region information to room inventory reports as well as filter event or section reports by rooms that are in a certain region.
RoomsEffectiveDateReportView	This is the main rooms reporting view. Contains rows for all configurations of each room, and room records for

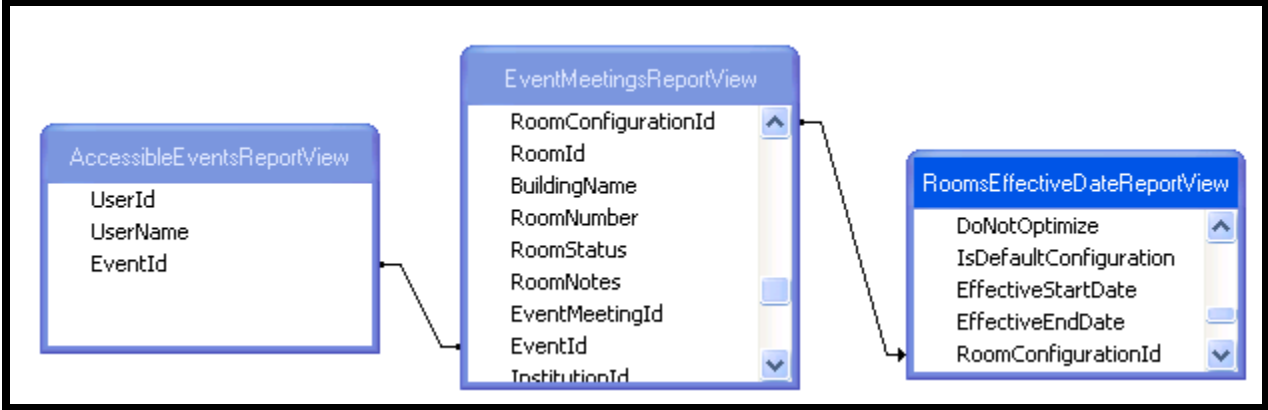
	each effective date of a room. The RoomConfigurationId field is used to join to section meeting, event meeting, and room activity views to show which room configuration was scheduled for each activity.
RoomUtlztnActivityByTypeView	Similar to the RoomUtlztnActivityView, but breaks out activities by type (section, event, etc.) allowing the creation of event specific or section specific utilization reports.
RoomUtlztnActivityView	This is the main room utilization view. This view contains information on all activities booked into each room, breaking every activity into specific 10 minute timeslices on specific days. This view rolls up crosslisted and doublebooked activities, counting each time slice as only being used once. This view also adds up enrollments and max enrollments of crosslisted and doublebooked activities. This view used to generate specific date/time utilization reports.
SectionMeetingsCLReportView	Similar to the SectionMeetingsReportView, however this view adds an "is parent" field that allows a report to roll up crosslisted or double booked sections into one parent row and add up enrollment and max enrollment values appropriately.
SectionMeetingsReportView	This is the main academic sections reporting view. Contains information on sections and section meetings.
UserPermissionsReportView	Contains information on user permissions associated with each Astra user.

AccessibleEventsReportView	
Field Name	Notes
UserId	When a report is run in Astra Schedule, a parameter called "User ID" is passed directly to the report. Utilizing a report parameter in Crystal Reports called "User ID", a report can be filtered to only return rows from this AccessibleEventsReportView that match the UserID of the user running the report.
UserName	The username associated with the UserId in this view.
EventId	Commonly inner-joined to the EventID field in the EventMeetingsReportView to allow a report to filter events to only events that are viewable for a user in Astra Schedule.

**View Notes:**

This is an optional view used to filter event activities from event reports to only show events that a user has viewable access to in Astra Schedule. Removing this table from existing reports or creating new event reports without using this table will allow any user to see all events on the report, regardless of their security access.

**Join example from the Events by Date and Time report**

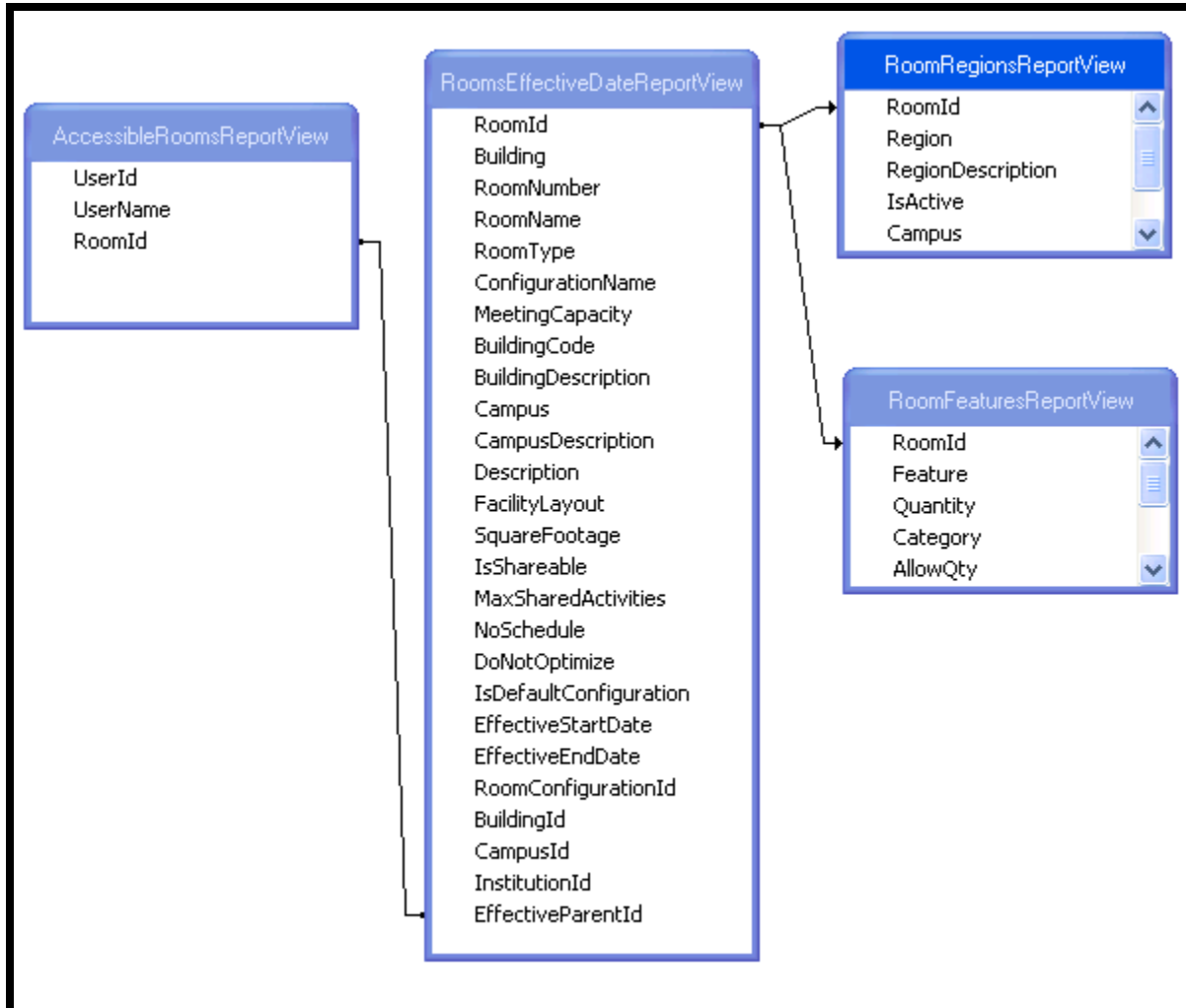


<b>AccessibleRoomsReportView</b>	
<b>Field Name</b>	<b>Notes</b>
UserId	When a report is run in Astra Schedule, a parameter called "User ID" is passed directly to the report. Utilizing a report parameter in Crystal Reports called "User ID", a report can be filtered to only return rows from this AccessibleRoomsReportView that match the UserID of the user running the report.
UserName	The username associated with the UserId in this view.
RoomId	Commonly inner-joined to the RoomID field in the RoomsEffectiveDateReportView to allow a report to filter rooms to only rooms that are viewable for a user in Astra Schedule.

### View Notes:

This is an optional view used to filter rooms from reports to only show rooms that a user has viewable access to in Astra Schedule. Removing this table from existing reports or creating new rooms reports without using this table will allow any user to see all rooms on the report, regardless of their security access.

### Join example from the Rooms by Building report

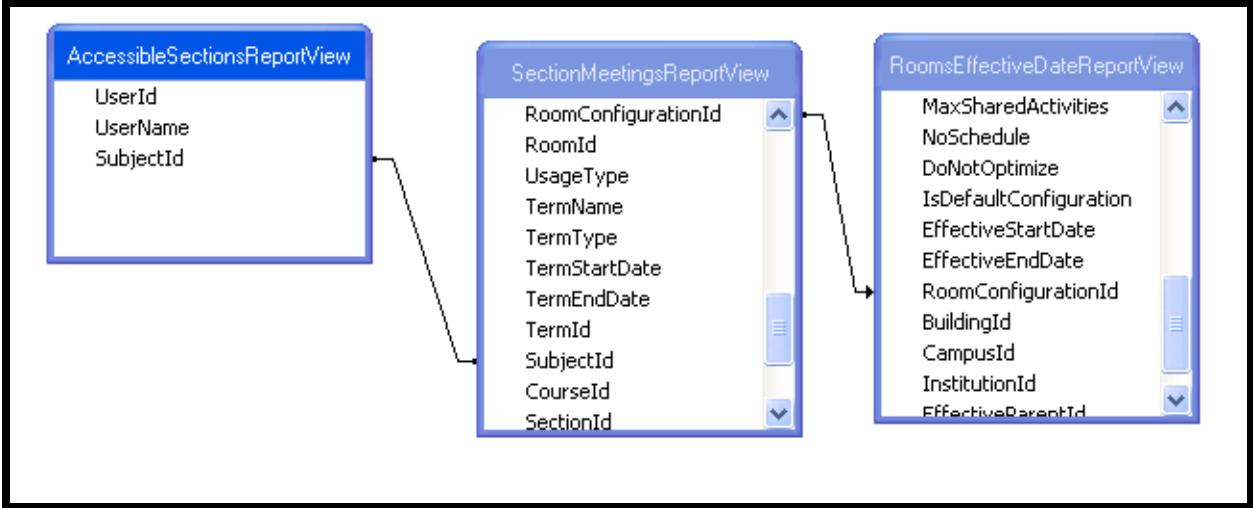


AccessibleSectionsReportView	
Field Name	Notes
UserId	When a report is run in Astra Schedule, a parameter called "User ID" is passed directly the report. Utilizing a report parameter in Crystal Reports called "User ID", a report can be filtered to only return rows from this AccessibleSectionsReportView that match the UserID of the user running the report.
UserName	The username associated with the UserId in this view.
SubjectId	Commonly inner-joined to the SubjectID field in the SectionMeetingsReportView to allow a report to filter sections to only subjects that are viewable for a user in Astra Schedule.

**View Notes:**

This is an optional view used to filter sections from reports to only show subject areas that a user has viewable access to in Astra Schedule. Removing this table from existing reports or creating new sections reports without using this table will allow any user to see all sections on the report, regardless of their security access.

**Join example from the Sections by Building and Room for Selected Term report**

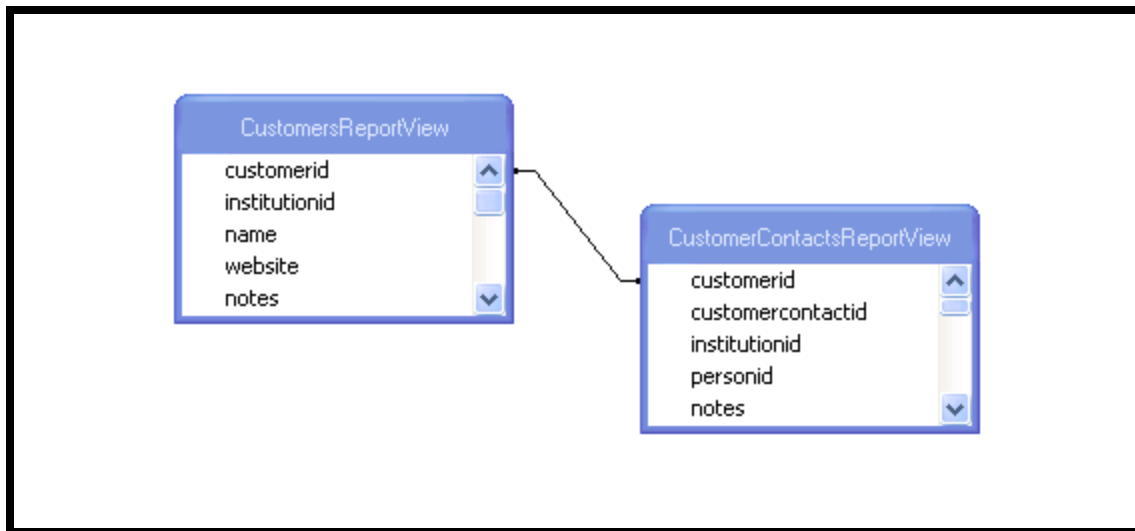


<b>CustomerContactsReportView</b>	
<b>Field Name</b>	<b>Notes</b>
customerid	Can be joined to the CustomerId field in the CustomersReportView to build a report that lists customer and contact info.
customercontactid	Can be joined to the CustomerContactId field in the EventMeetingsReportView to pull contact info into an events report.
institutionid	When a report is run in Astra Schedule, a parameter called "Institution ID" is passed directly the report. Utilizing a report parameter in Crystal Reports called "Institution ID", a report can be filtered to only return rows from a single institution when using a multi-institution database.
personid	Can be used to join to the ID field in the People table to pull additional information from their Person record.
notes	Value comes from the Notes field in the CustomerContacts table.
prefix	Value comes from People table.
firstname	Value comes from People table.
middlename	Value comes from People table.
lastname	Value comes from People table.
suffix	Value comes from People table.
employeeid	Value comes from People table.
employer	Value comes from People table.
title	Value comes from People table.
address1	Value comes from Addresses table.
address2	Value comes from Addresses table.
city	Value comes from Addresses table.
state	Value comes from Addresses table.
zipcode	Value comes from Addresses table.
zipcodeplus	Value comes from Addresses table.
county	Value comes from Addresses table.
phone	Value comes from ContactInformation table.
extension	Value comes from ContactInformation table.
mobile	Value comes from ContactInformation table.
fax	Value comes from ContactInformation table.
email	Value comes from ContactInformation table.
instantmessagename	Value comes from ContactInformation table.

**View Notes:**

This view contains information from a person's Customer Contact information seen on the Customer screen in Astra Schedule. This can differ from the information in their People record.

**Join example from the Customer and Contact List report**



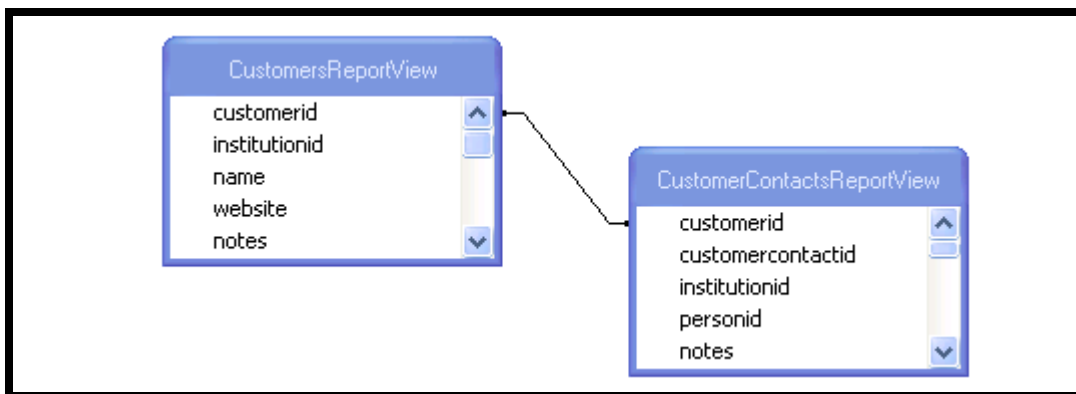


CustomersReportView	
Field Name	Notes
customerid	Can be joined to the CustomerId field in the CustomersReportView or the EventMeetingsReportView to insert customer information into those reports.
institutionid	When a report is run in Astra Schedule, a parameter called "Institution ID" is passed directly to the report. Utilizing a report parameter in Crystal Reports called "Institution ID", a report can be filtered to only return rows from a single institution when using a multi-institution database.
name	Value comes from the Customer table.
website	Value comes from the Customer table.
notes	Value comes from the Customer table.
address1	Value comes from Addresses table.
address2	Value comes from Addresses table.
city	Value comes from Addresses table.
state	Value comes from Addresses table.
zipcode	Value comes from Addresses table.
zipcodeplus	Value comes from Addresses table.
county	Value comes from Addresses table.
phone	Value comes from ContactInformation table.
extension	Value comes from ContactInformation table.
mobile	Value comes from ContactInformation table.
fax	Value comes from ContactInformation table.
email	Value comes from ContactInformation table.

**View Notes:**

This view pulls information from the Customer table and contains the fields that are displayed and edited in the Customer Info screen in Astra Schedule.

**Join example from the Customer and Contact List report**

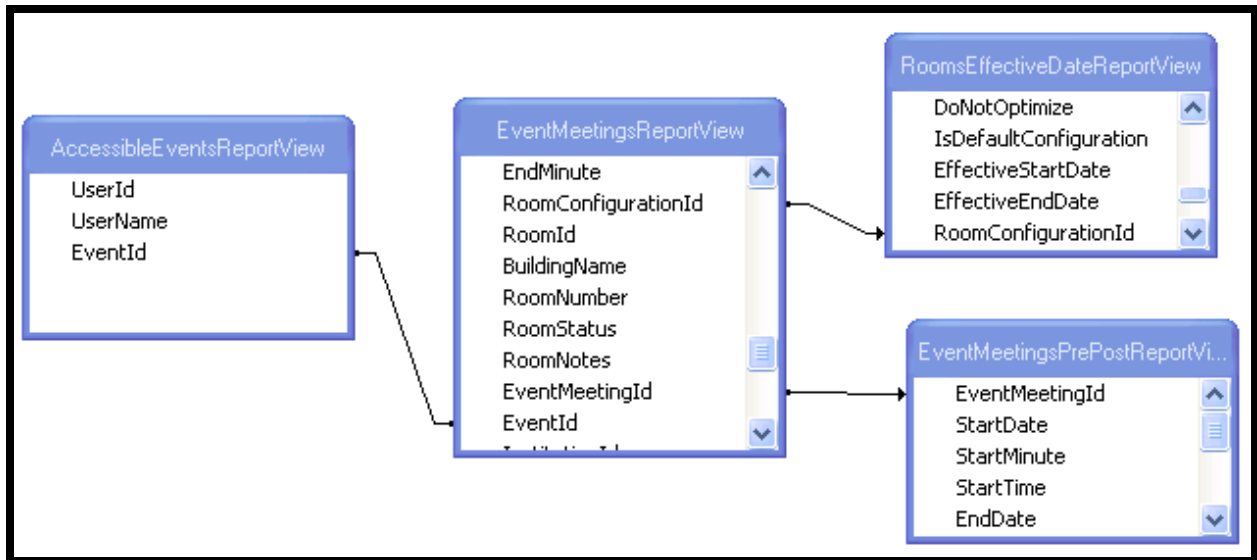


<b>EventMeetingsPrePostReportView</b>	
<b>Field Name</b>	<b>Notes</b>
EventMeetingId	Joins to the EventMeetingId in the EventMeetingReportView to allow reporting on setup windows, teardown windows, pre meetings and post meetings
StartDate	
StartMinute	Integer field corresponding to the minute when the activity begins with 12:01 am getting the value of "1" and 11:59 pm getting the value of "1439".
StartTime	
EndDate	Date that the pre/post activity ends.
EndMinute	Integer field corresponding to the minute when the activity ends with 12:01 am getting the value of "1" and 11:59 pm getting the value of "1439".
EndTime	
Description	Contains the "Description" value entered in Astra Schedule when the setup, teardown, pre meeting or post meeting records are entered.
IsBeforeMeeting	True/False flag to identify if the activity happens before the event meeting it is associated with.
TypeDescription	Contains the values of "Pre Meeting", "Post Meeting", "Setup", and "Teardown". Reports can be filtered or records can be suppressed based on this value (e.g. a report can bring values in from this view but only show setup and teardown windows and exclude pre and post meeting info).
RecordType	RecordType code associated with the TypeDescription above.

**View Notes:**

With setup, teardown, pre meeting and post meeting records all contained in one view, the use of sub reports in Crystal Reports is often necessary to isolate these activities in a report. An example of the use of sub reports to pull this data can be found in the Event Detail by Date Range report in Astra Schedule.

**Join example from the Events by Date and Time with Setup and Teardown report**



<b>EventMeetingsReportView</b>	
<b>Field Name</b>	<b>Notes</b>
EventCreatedDate	Value comes from the CreatedDate in the Events table
MeetingCreatedDate	Value comes from the CreatedDate in the EventMeetings table.
ScheduledDate	Value comes from the ScheduledDate in the EventMeetingsResources table.
MeetingNumber	Value comes from the EventMeetings table.
MeetingName	Value comes from the Name field in the EventMeetings table.
MeetingStatus	Value comes from the current workflow state of the meeting (Scheduled, Incomplete, etc.).
EventMeetingType	Meeting type associated with the event meeting.
StartDateTime	
EndDateTime	
StartDate	Event meeting start date.
EndDate	Event meeting end date.
StartTime	Event meeting start time.
EndTime	Event meeting end time.
DaysMet	Contains single letter identifiers for the days of the week the event meeting occurs (UMTWRFS)
MaxAttendance	Max Attendance from the EventMeetings table
ActualAttendance	Actual Attendance from the EventMeetings table
MeetingIsFeatured	True/False flag to signify if this was configured as a "Featured" meeting in Astra.
MeetingIsPrivate	True/False flag to signify if this was configured as a "Private" meeting in Astra.
MeetingNotes	Holds event meeting Description field. Must join the EventMeetingId to the RecordId in the Notes table to pull the actual Event Meeting Notes.
MeetingSchedulerId	UserId associated with the Astra user that scheduled the event meeting.
MeetingScheduler	User
ReservationNumber	Event Reservation Number
Name	Name of the overall event. The individual event meeting name is in the MeetingName field.
EventStatus	Value comes from the current workflow state of the event (Scheduled, Incomplete, etc.).
EventType	
Customer	Customer name
CustomerContact	Contact name
EstimatedAttendance	

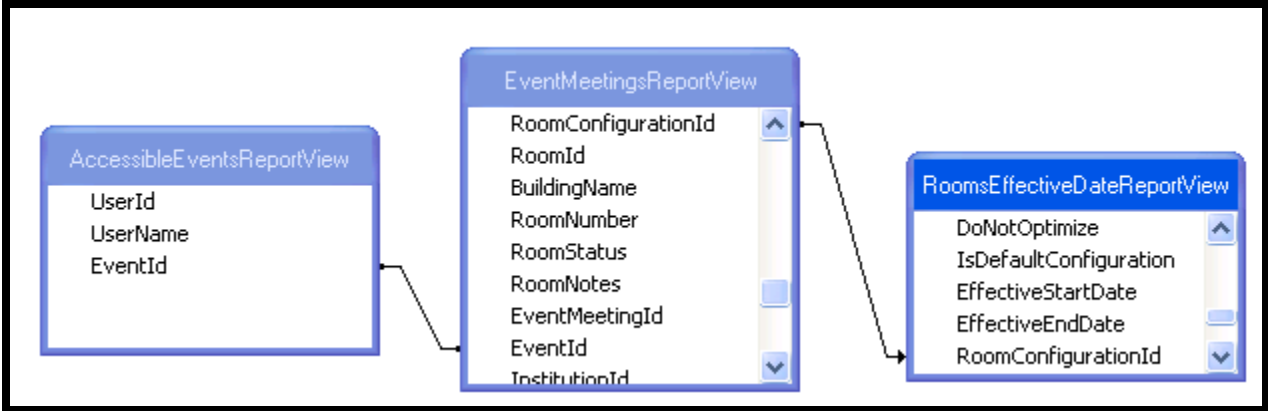
EventIsFeatured	
EventIsPrivate	
EventNotes	Holds event Description field. Must join the EventId to the RecordId in the Notes table to pull the actual Event Notes.
EventSchedulerId	
EventScheduler	
IsRoomRequired	
StartMinute	Integer field corresponding to the minute when the activity begins with 12:01 am getting the value of "1" and 11:59 pm getting the value of "1439".
EndMinute	Integer field corresponding to the minute when the activity ends with 12:01 am getting the value of "1" and 11:59 pm getting the value of "1439".
RoomConfigurationId	Contains the unique identifier for the specific room configuration used for the event meeting. This field can be joined to the RoomConfigurationId field in the RoomsEffectiveDateReportingView to pull in additional room information.
RoomId	Contains the RoomID of the room used for the event. This field typically should not be used to join back to the RoomsEffectiveDateReportingView because any room with multiple configurations will cause multiple rows with same RoomId, potentially causing record duplication in reports. Joins should be done using the RoomConfigurationId instead.
BuildingName	
RoomNumber	
RoomStatus	Contains the status of the room associated with the event (Scheduled, Requested, etc.).
RoomNotes	Value comes from the Description field in the EventMeetingResoures table.
EventMeetingId	Unique identifier from the Id field in the EventMeetings table. This field can be joined to the EventMeetingId field in the EventMeetingsPrePostReportView to pull in setup, teardown and pre/post meeting info. Can also be joined to the RecordId in the Notes table to pull in Event Meeting notes.
EventId	Unique identifier from the Id field in the Events table. Can be joined to the RecordId in the Notes table to pull in Event notes.
InstitutionId	When a report is run in Astra Schedule, a parameter called "Institution ID" is passed directly the report. Utilizing a report parameter in Crystal Reports called "Institution ID", a report can be filtered to

	only return rows from a single institution when using a multi-institution database.
CustomerId	Can be joined to the CustomerId field in the CustomerReportView to access additional customer information.
CustomerContactId	Can be joined to the in the CustomerContactId field in the CustomerContactsReportView to access additional contact information.
SetupStartDate	Not used – Held for future consideration. Must join to EventMeetingId to the EventMeetingsPrePostReportView to pull in Setup information.
SetupStartMinute	Not used – Held for future consideration.
SetupStartTime	Not used – Held for future consideration.
SetupEndDate	Not used – Held for future consideration.
SetupEndMinute	Not used – Held for future consideration.
SetupEndTime	Not used – Held for future consideration.
SetupDescription	Not used – Held for future consideration.
IsSetupWindow	Not used – Held for future consideration.

**View Notes:**

This view pre-filters deleted event meetings. It is important to note that this view does not contain event notes, event meeting notes, setup or teardown windows, or pre/post meetings. Using the EventId or EventMeetingId fields to join to the Notes table or to the EventMeetingsPrePostReportView will allow a report to include those items. However, doing so may require the use of sub reports in Crystal Reports, otherwise the “one to many” relationship on multiple tables and views will cause unwanted record duplication.

**Join example from the Events by Date and Time report**

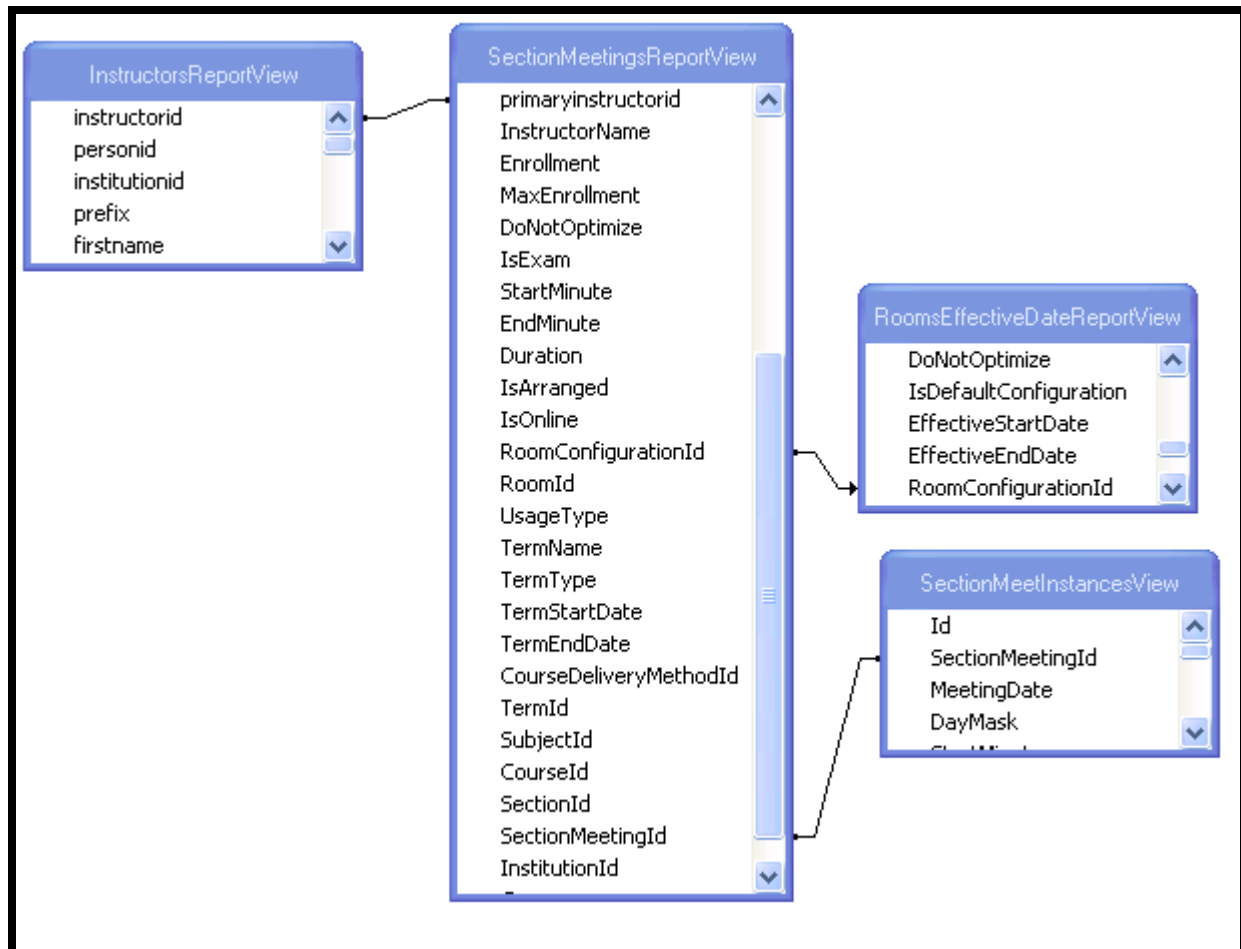


<b>InstructorsReportView</b>	
<b>Field Name</b>	<b>Notes</b>
instructorid	Comes from the Id field in the Instructor table. Can join to the primaryinstructorid field in the SectionMeetingsReportView to supply additional instructor information from this view to academic section reports.
personid	Comes from the PersonId field in the Instructor table and can be used to join to the Id field in the People table.
institutionid	When a report is run in Astra Schedule, a parameter called "Institution ID" is passed directly the report. Utilizing a report parameter in Crystal Reports called "Institution ID", a report can be filtered to only return rows from a single institution when using a multi-institution database.
prefix	Value comes from the People table.
firstname	Value comes from the People table.
middlename	Value comes from the People table.
lastname	Value comes from the People table.
suffix	Value comes from the People table.
employeeid	Value comes from the People table.
employer	Value comes from the People table.
title	Value comes from the People table.
address1	Value comes from Addresses table.
address2	Value comes from Addresses table.
city	Value comes from Addresses table.
state	Value comes from Addresses table.
zipcode	Value comes from Addresses table.
zipcodeplus	Value comes from Addresses table.
county	Value comes from Addresses table.
phone	Value comes from the ContactInformation table.
extension	Value comes from the ContactInformation table.
mobile	Value comes from the ContactInformation table.
fax	Value comes from the ContactInformation table.
email	Value comes from the ContactInformation table.
instantmessagename	Value comes from the ContactInformation table.

**View Notes:**

This view pre-filters deleted records out of the Instructor table.

**Join example from the Instructor Summary Grid report**





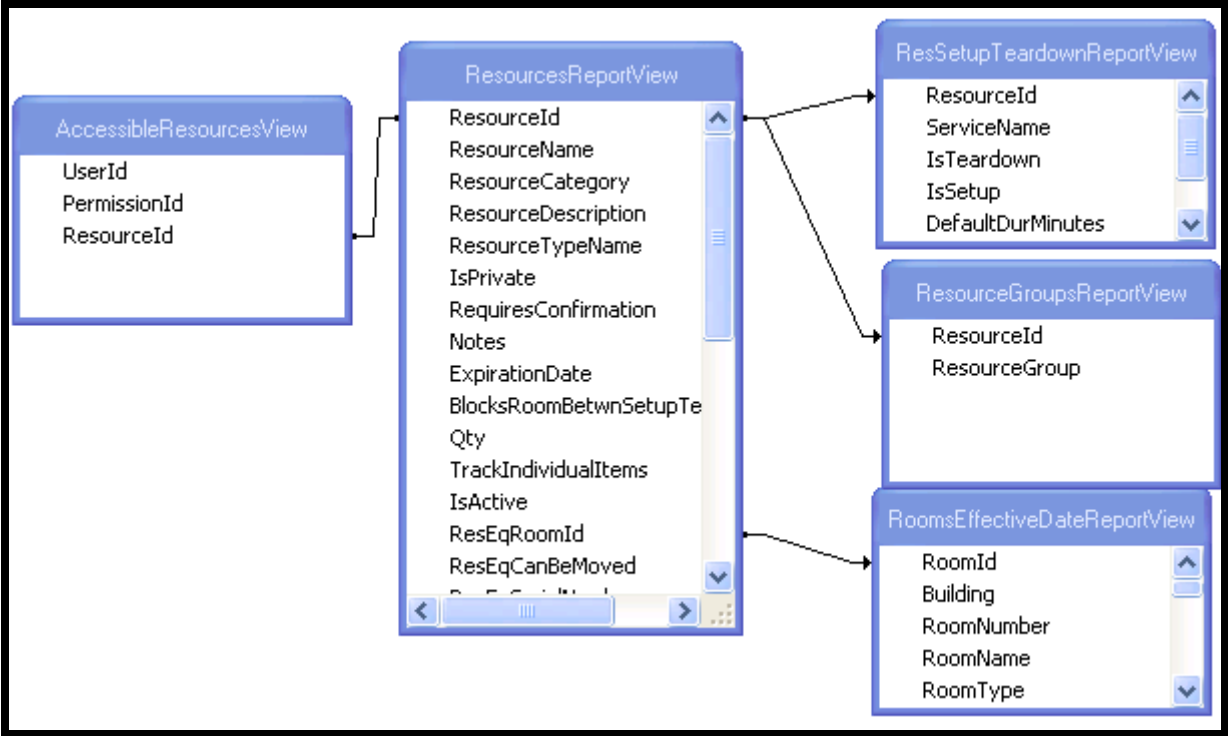
<b>ResourcesReportView</b>	
<b>Field Name</b>	<b>Notes</b>
ResourceId	Generated from the Id field in the Resources table, this field can be joined to the ResourceId field in the SchedResForEvtMtngsReportView to provide additional resource info to a report that shows scheduled resources.
ResourceName	
ResourceCategory	
ResourceDescription	
ResourceTypeName	
IsPrivate	
RequiresConfirmation	
Notes	Value comes from the Notes field in the Resources table.
ExpirationDate	
BlocksRoomBetwnSetupTeardown	
Qty	Value comes from the Qty field in the Resources table to show how many of the resource is in the inventory.
TrackIndividualItems	
IsActive	
ResEqRoomId	Value comes from the ResourceEquipment table.
ResEqCanBeMoved	Value comes from the ResourceEquipment table.
ResEqSerialNumber	Value comes from the ResourceEquipment table.
ResEqBarCode	Value comes from the ResourceEquipment table.
ResEqInventoryCode	Value comes from the ResourceEquipment table.
ResEqMakeModel	Value comes from the ResourceEquipment table.
ResEqCondition	Value comes from the ResourceEquipment table.
ResEqWarrantyInfo	Value comes from the ResourceEquipment table.
ResEqPurchaseDate	Value comes from the ResourceEquipment table.
ResEqRequiresCheckinOut	Value comes from the ResourceEquipment table.
ResEqStorageLocation	Value comes from the ResourceEquipment table.
ResSrvDefaultDurMinutes	Value comes from the ResourceServices table.
ResSrvReqMinDurMinutes	Value comes from the ResourceServices table.

	table.
ResSrvIsInRoomExclusive	Value comes from the ResourceServices table.
ResSrvIsSetup	Value comes from the ResourceServices table.
ResSrvIsTeardown	Value comes from the ResourceServices table.
ResSrvReservesRoomForDuration	Value comes from the ResourceServices table.
InstitutionId	When a report is run in Astra Schedule, a parameter called "Institution ID" is passed directly the report. Utilizing a report parameter in Crystal Reports called "Institution ID", a report can be filtered to only return rows from a single institution when using a multi-institution database.

**View Notes:**

This view is typically used to provide information for a resource inventory report. It contains the values found on the Equipment or Services form in Astra Schedule. To create a report showing scheduled resources for events, data should be pulled from SchedResForEvtMtngsReportView.

**Join example from the Resource Inventory by Category report**



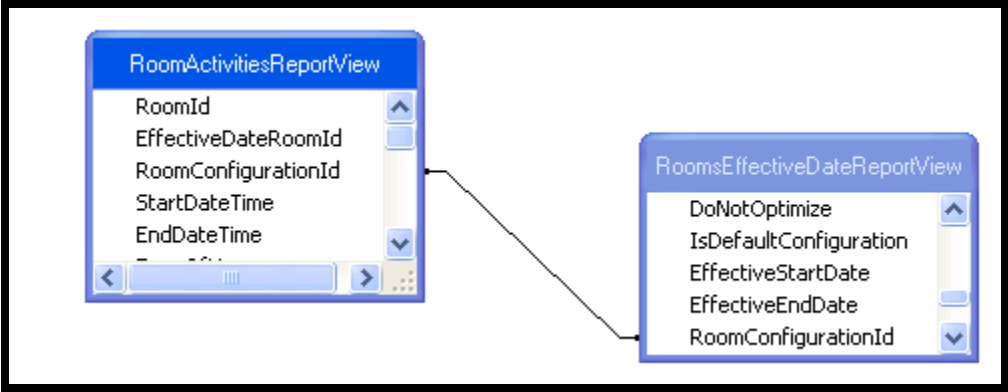
<b>RoomActivitiesReportView</b>	
<b>Field Name</b>	<b>Notes</b>
RoomId	Contains the RoomID of the room used for the event. This field typically should not be used to join back to the RoomsEffectiveDateReportingView because any room with multiple configurations will cause multiple rows with same RoomId, potentially causing record duplication in reports. Joins should be done using the RoomConfigurationId instead.
EffectiveDateRoomId	Contains the RoomID of the room used for the event. This field typically should not be used to join back to the RoomsEffectiveDateReportingView because any room with multiple configurations will cause multiple rows with same RoomId, potentially causing record duplication in reports. Joins should be done using the RoomConfigurationId instead.
RoomConfigurationId	Contains the unique identifier for the specific room configuration used for the event meeting. This field can be joined to the RoomConfigurationId field in the RoomsEffectiveDateReportingView to pull in additional room information.
StartDateTime	Start date and time of activity.
EndDateTime	End date and time of activity.
TypeOfUsage	Always contains the value of "Scheduled"
UsagelsConflict	Always contains the value of "True"
ActivitySponsor	For sections, this field contains the SUBJECT code. For events, this field contains the customer.
Activity	For sections, this field contains Subject,Course,Section,MeetingType. For events this field contains the Event Reservation number and meeting number.
ActivityTitle	For sections, this field contains course title. For events this field contains the meeting name.
Contact	For sections, this field contains the primary instructor name. For events, this field contains the contact name.
UserId	<b>Note: In order to allow for filtering by security, the RoomActivitiesReportView contains a copy of every room activity for each user that has access to view it (based on their user security in Astra).</b> When a report is run in Astra Schedule, a parameter called "User ID" is passed directly

	the report. Utilizing a report parameter in Crystal Reports called "User ID", a report can be filtered to only return rows from this RoomActivitiesReportView that match the UserID of the user running the report. <b>Failure to filter by UserId in reports utilizing this view can result in record duplication in the report.</b>
UserName	The username associated with the UserId in this view.
UsageDate	The date that the activity occurs.
UsageStartMinute	Integer field corresponding to the minute when the activity begins with 12:01 am getting the value of "1" and 11:59 pm getting the value of "1439".
UsageEndMinute	Integer field corresponding to the minute when the activity ends with 12:01 am getting the value of "1" and 11:59 pm getting the value of "1439".
SetupStart	Not used – Held for future consideration.
SetupDurationMinutes	Not used – Held for future consideration.
TeardownStart	Not used – Held for future consideration.
TeardownDurationMinutes	Not used – Held for future consideration.

**View Notes:**

This view is built from information in the RoomUsage table and contains records for all section meetings and event meetings in specific rooms. This view allows the creation of section and event "combo" reports. Per the note above on the UserId field, **in order to allow for filtering by security, the RoomActivitiesReportView contains a copy of every room activity for each user that has access to view it (based on their user security in Astra). Failure to filter by UserId in reports utilizing this view can result in record duplication in the report.**

**Join example from the All Activities for Selected Date Range by Date report**

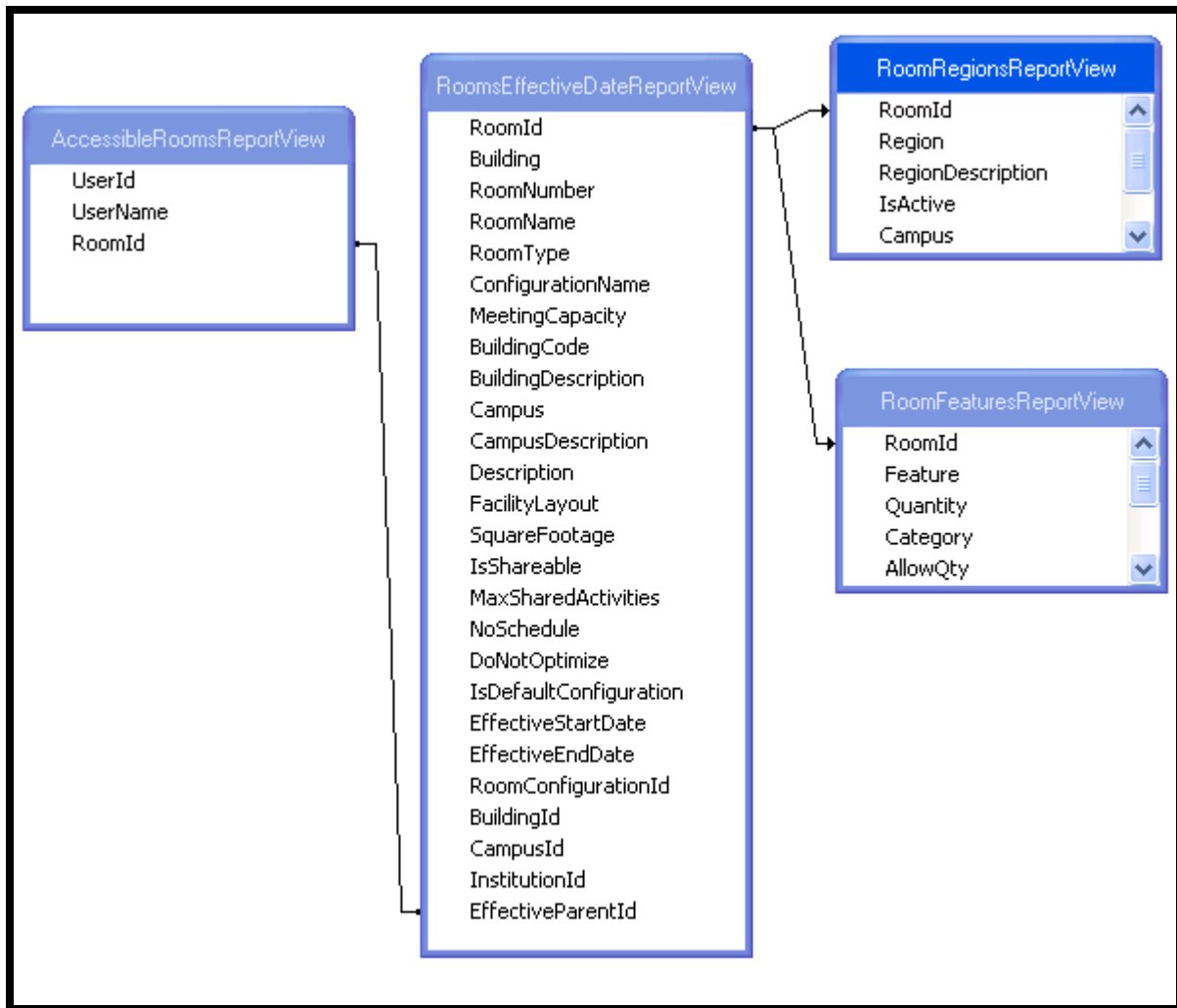


<b>RoomFeaturesReportView</b>	
<b>Field Name</b>	<b>Notes</b>
RoomId	Can be joined to the RoomId field in the RoomsEffectiveDateReportView to add room feature info to an existing report, or filter an existing report to only include rooms with a specific feature.
Feature	Value comes from the Name field in the Feature table.
Quantity	If quantities are enabled, this value pulled from the RoomFeatureQuantities table.
Category	Value comes from the Name field in the FeatureCategories table.
AllowQty	
FeatureDescription	Value comes from the Description field in the Feature table.
IsActive	
CategoryDescription	Value comes from the Description field in the FeatureCategories table.
FeatureId	
InstitutionId	When a report is run in Astra Schedule, a parameter called "Institution ID" is passed directly to the report. Utilizing a report parameter in Crystal Reports called "Institution ID", a report can be filtered to only return rows from a single institution when using a multi-institution database.

**View Notes:**

This view is pre filtered to remove deleted room features. Due to the "one to many" relationship of this view, pulling feature information can cause record duplication in reports without correct grouping or the use of sub reports in Crystal Reports.

**Join example from the Rooms by Building report**



<b>RoomOptBottlenecksReportView</b>	
<b>Field Name</b>	<b>Notes</b>
ID	Value from ID field in Sandboxes table.
NAME	Value from the name field in the Sandboxes table.
TERM	
SUBJECT	
COURSE	
SECTION	
TITLE	
CROSSLIST	
MAXENROLLMENT	
ENROLLMENT	
DAYSMET	
STARTDATE	
ENDDATE	
STARTMINUTE	Integer field corresponding to the minute when the activity begins with 12:01 am getting the value of "1" and 11:59 pm getting the value of "1439".
ENDMINUTE	Integer field corresponding to the minute when the activity ends with 12:01 am getting the value of "1" and 11:59 pm getting the value of "1439".
STARTTIME	
ENDTIME	
INSTRUCTOR	
MEETINGTYPE	
REASON	

**View Notes:**

This view is pulling unscheduled sections from the OptimizerSandboxSectSearchView and only including records that are marked as bottlenecks (specifically, with a RoomStatusCode of "452" which means "unscheduled"). These are the same sections and fields that appear on the Bottlenecked Sections tab in the Room Optimization Sandbox results screen in Astra Schedule.

<b>RoomOptInfeasiblesReportView</b>	
<b>Field Name</b>	<b>Notes</b>
ID	Value from ID field in Sandoxes table.
NAME	Value from the name field in the Sandboxes table.
TERM	
SUBJECT	
COURSE	
SECTION	
TITLE	
CROSSLIST	
MAXENROLLMENT	
ENROLLMENT	
DAYSMET	
STARTDATE	
ENDDATE	
STARTMINUTE	Integer field corresponding to the minute when the activity begins with 12:01 am getting the value of "1" and 11:59 pm getting the value of "1439".
ENDMINUTE	Integer field corresponding to the minute when the activity ends with 12:01 am getting the value of "1" and 11:59 pm getting the value of "1439".
STARTTIME	
ENDTIME	
INSTRUCTOR	
MEETINGTYPE	
REASON	
HARDPREFS	

**View Notes:**

This view is pulling unscheduled sections from the OptimizerSandboxSectSearchView (specifically, with a RoomStatusCode of "452" which means "unscheduled") and only including records that have a matching value in the OptimizerInfeasibles table. These are the same infeasible sections and fields that appear on the Infeasible tab in the Room Optimization Sandbox results screen in Astra Schedule.

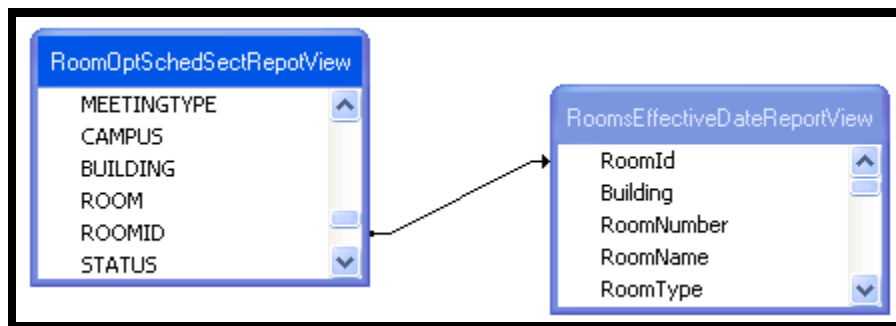


<b>RoomOptSchedSectReportView</b>	
<b>Field Name</b>	<b>Notes</b>
ID	Value from ID field in Sandoxes table.
NAME	Value from the name field in the Sandboxes table.
TERM	
SECTIONMEETINGID	
ISARRANGED	
INVALIDPATTERN	
SUBJECT	
COURSE	
SECTION	
TITLE	
CROSSLIST	
MAXENROLLMENT	
ENROLLMENT	
DAYSMET	
STARTDATE	
ENDDATE	
STARTMINUTE	Integer field corresponding to the minute when the activity begins with 12:01 am getting the value of "1" and 11:59 pm getting the value of "1439".
ENDMINUTE	Integer field corresponding to the minute when the activity ends with 12:01 am getting the value of "1" and 11:59 pm getting the value of "1439".
STARTTIME	
ENDTIME	
INSTRUCTOR	
MEETINGTYPE	
CAMPUS	
BUILDING	
ROOM	
ROOMID	
STATUS	
ROOMSCORE	
PREFSCORE	
FILLScore	

**View Notes:**

This view is pulling scheduled sections from the OptimizerSandboxSectSearchView (specifically, with a RoomStatusCode of "451" which means "scheduled").. These are the same scheduled sections and fields that appear on the Sections tab in the Room Optimization Sandbox results screen in Astra Schedule.

**Join example from the Room Optimization – Scheduled Sections by Subject report**



<b>RoomOptSummaryReportView</b>	
<b>Field Name</b>	<b>Notes</b>
ID	Value from ID field in Sandboxes table.
NAME	Value from the name field in the Sandboxes table.
TOTALSECTIONS	Value comes from OptimizerRuns table.
INSCOPE	Value comes from OptimizerRuns table.
SCHEDULED	Value comes from OptimizerRuns table.
INFEASIBLES	Value comes from OptimizerRuns table.
BOTTLENECKS	Value comes from OptimizerRuns table.
ONLINESECTS	Value comes from OptimizerRuns table.
ARRANGED	Value comes from OptimizerRuns table.
DONOTOPTS	Value comes from OptimizerRuns table.
INVALIDPTTRN	Value comes from OptimizerRuns table.
WITHROOMS	Value comes from OptimizerRuns table.
UNSCHEDULED	Value comes from OptimizerRuns table.
CREATED	Value comes from OptimizerRuns table.
CREATOR	
PREFERENCESET	Value comes from the Name field in the PreferenceSet table.
DATASOURCE	
KEEPROOMS	Value comes from OptimizerSettings table.
PREPROCHARD	Value comes from OptimizerSettings table.
B2BINST	Value comes from OptimizerSettings table.
SAMEROOM	Value comes from OptimizerSettings table.
SAMEBUILD	Value comes from OptimizerSettings table.
B2BINTERVAL	Value comes from OptimizerSettings table.
ENROLL	
SEATFILL	Value comes from OptimizerSettings table.
SEATWGHT	Value comes from OptimizerSettings table.
PREFWGHT	Value comes from OptimizerSettings table.
ROOMTYPEWGHT	Value comes from OptimizerSettings table.
FEATUREWGHT	Value comes from OptimizerSettings table.
REGIONWGHT	Value comes from OptimizerSettings table.
BLDGWGHT	Value comes from OptimizerSettings table.
ROOMWGHT	Value comes from OptimizerSettings table.

**View Notes:**

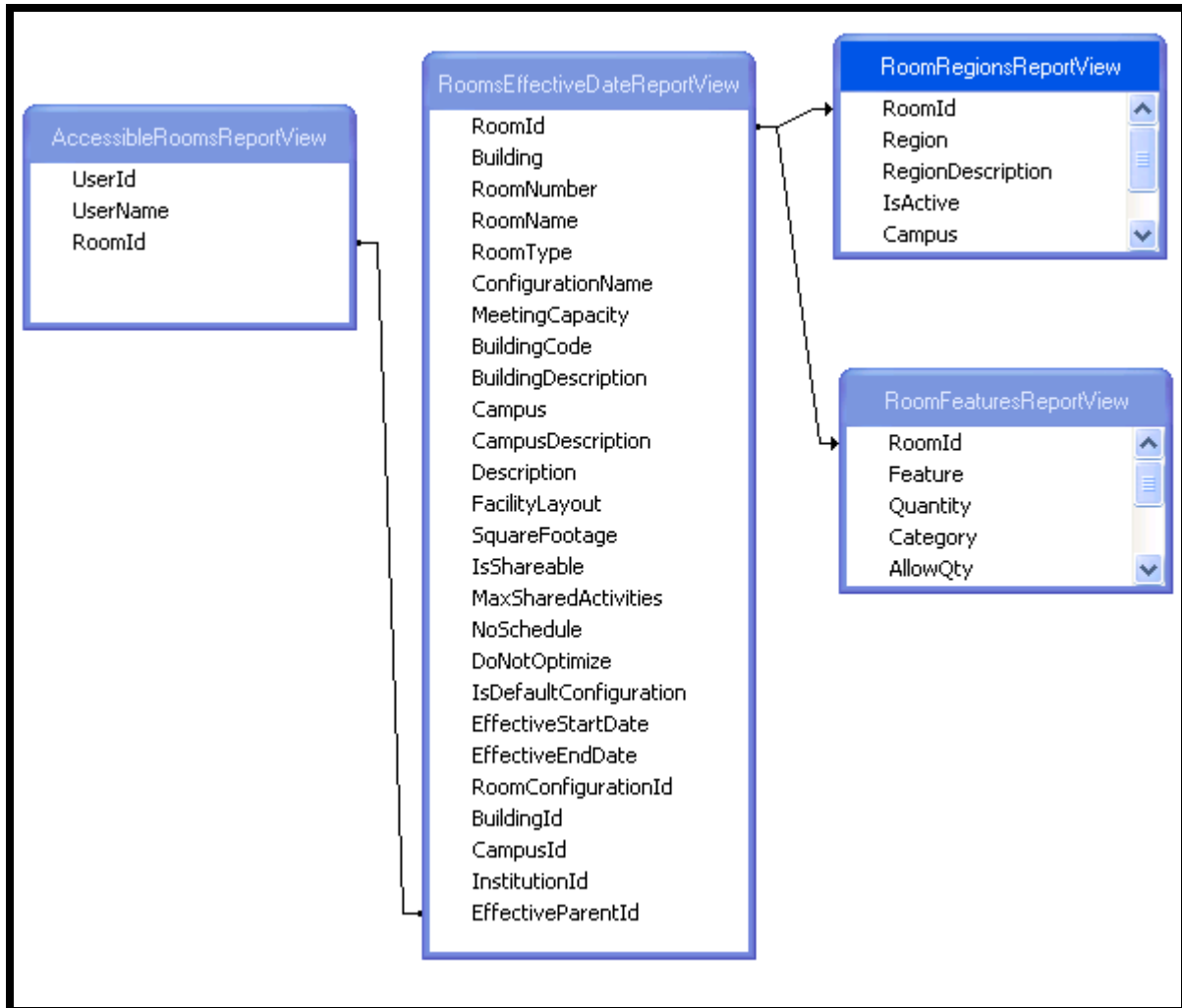
This view is pulling the fields used to display the values on the Settings tab and the summary portion of the Results tab on the Room Optimization Sandbox results screen in Astra Schedule.

<b>RoomRegionsReportView</b>	
<b>Field Name</b>	<b>Notes</b>
RoomId	Can be joined to the RoomId field in the RoomsEffectiveDateReportView to add room region info to an existing report, or filter an existing report to only include rooms in a specific region.
Region	Value comes from the Name field in the Regions table.
RegionDescription	Value comes from the Description field in the Regions table.
IsActive	
Campus	
RegionId	Value comes from the RegionId in the RoomRegions table.
InstitutionId	When a report is run in Astra Schedule, a parameter called "Institution ID" is passed directly the report. Utilizing a report parameter in Crystal Reports called "Institution ID", a report can be filtered to only return rows from a single institution when using a multi-institution database.

**View Notes:**

This view is pre filtered to remove deleted room regions. Due to the “one to many” relationship of this view, pulling region information can cause record duplication in reports without correct grouping or the use of sub reports in Crystal Reports.

**Join example from the Rooms by Building report**



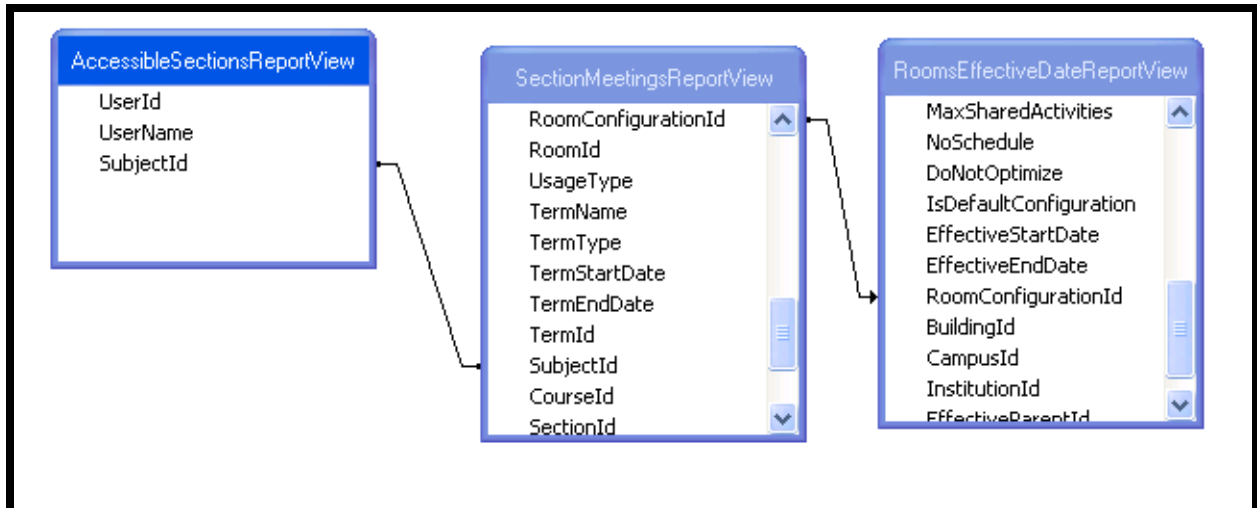
<b>RoomsEffectiveDateReportView</b>	
<b>Field Name</b>	<b>Notes</b>
RoomId	Value comes from the Id field in the Rooms table. If this field is used in a join to other tables or views, record duplication can occur if a room has multiple configurations (this view gets one row for each configuration of a room). This can be avoided by filtering the report to only include rows from this view where the IsDefaultConfiguration field is true, or by joining based on the RoomConfigurationId field instead. Adding Effective dates to rooms results in the generation of additional room records (each with unique RoomId values and unique effective start and end dates).
Building	Value comes from the Name field in the Building table.
RoomNumber	Value comes from the Rooms table.
RoomName	Value comes from the Name field in the Rooms table.
RoomType	Value comes from the Name field in the RoomTypes table.
ConfigurationName	Value comes from the Name field in the RoomConfigurations table.
MeetingCapacity	Value comes from RoomConfigurations table.
BuildingCode	Value comes from the Buildings table.
BuildingDescription	Value comes from the Description field in the Buildings table.
Campus	Value comes from Name field in the Campus table.
CampusDescription	Value comes from Description field in the Campus table.
Description	Value comes from the Description field in the Rooms table.
FacilityLayout	Value comes from the Name field in the FacilityLayouts table.
SquareFootage	Value comes from the Rooms table.
IsShareable	Value comes from the Rooms table.
MaxSharedActivities	Value comes from the Rooms table.
NoSchedule	Value comes from the Rooms table.
DoNotOptimize	Value comes from the Rooms table.
IsDefaultConfiguration	Value comes from the RoomConfigurations table. While this view contains multiple rows for rooms that have multiple configurations, only one configuration will be marked as the default. If joining to this view on the RoomId field filtering a report to only show records

	from this view where IsDefalutConfiguration is true can assist with elimination of record duplication.
EffectiveStartDate	This the date that this room becomes "active". Adding Effective dates to rooms results in the generation of additional room records (each with unique RoomId values and unique effective start and end dates). When creating room inventory reports, it is recommended to input a specific date parameter for the inventory to be run, and then filter the report to return the rooms are effective only on that date.
EffectiveEndDate	This is the date that this room becomes "inactive". Adding Effective dates to rooms results in the generation of additional room records (each with unique RoomId values and unique effective start and end dates). When creating room inventory reports, it is recommended to input a specific date parameter for the inventory to be run, and then filter the report to return the rooms are effective only on that date.
RoomConfigurationId	Value comes from the Id field in the RoomConfigurations table. Contains the unique identifier for the specific room configuration used when scheduling activities (sections and events). This field can be joined to the RoomConfigurationId field in the EventMeetingsReportView, SectionMeetingsReportView, and RoomActivitiesReoprtView to pull in additional room information.
BuildingId	Value comes from the BuildingId field in the Rooms table.
CampusId	Value comes from the CampusId field in the Building table.
InstitutionId	When a report is run in Astra Schedule, a parameter called "Institution ID" is passed directly the report. Utilizing a report parameter in Crystal Reports called "Institution ID", a report can be filtered to only return rows from a single institution when using a multi-institution database.
EffectiveParentId	While adding effective dates to rooms generates additional room records in the tables and views, all new effective dated rooms will retain the original RoomId value in this field.

### View Notes:

This is the main rooms reporting view. Contains rows for all configurations of each room, and room records for each effective date of a room. The RoomConfigurationId field is used to join to section meeting, event meeting, and room activity views to show which room configuration was scheduled for each activity. Without doing appropriate joining and filtering using the RoomId, RoomConfigurationId, effective dates, and IsDefaultConfiguration field (see notes on these fields above) unwanted record duplication may occur. An older view called RoomsReportView still remains in the Astra database, however it is older than this RoomsEffectiveDateReportView and is missing key fields dealing with effective dates and should not be used in reporting.

### Join example from the Sections by Building and Room for Selected Term report





<b>RoomUtilztnActivityByTypeView</b>	
<b>Field Name</b>	<b>Notes</b>
timesliceid	Id number associated with the 10 minute timeslice used by an activity. The timeslice id for the 12:00 am to 12:09 am time period is "0". The timeslice id for the 12:10 am to 12:19 am timeslice is "1". The timeslice id values increment every 10 minutes with the timeslice id for the 11:50 pm to 11:59 pm timeslice getting the value of "143".
timeslicestartminute	Corresponding start minute of reach timeslice id. Timeslice id "1" starts at 12:10 am and has a start minute of "10". Timeslice id "143" starts at 11:50 pm and has a start minute of "1430".
usagedate	Date on which the activity (timeslice usage) occurs.
roomid	RoomId for the room in which the activity occurs. Without a RoomConfigurationId in this view, a join must be done to the RoomsEffectiveDateReportView on the RoomId. To ensure there is no record duplication, the RoomsEffectiveDateReportView rows should be filtered in the report to only include rows where the IsDefaultConfiguration field is true.
activitytypecode	Identifies which type of activity is generating the usage row. Filtering on this value will allow a report to be written that shows "events only utilization" as opposed to "sections only utilization". The matching activities for the specific codes are: Section = 1 Event = 2 UsagePolicy = 9 AdHocReservation = 130 ResourceReservation = 250 SetupTeardownWindow = 251 PrePostMeeting = 252
institutionid	When a report is run in Astra Schedule, a parameter called "Institution ID" is passed directly the report. Utilizing a report parameter in Crystal Reports called "Institution ID", a report can be filtered to only return rows from a single institution when using a multi-institution database.
activitycount	Total number of activities concurrently utilizing the timeslice in each room.

totalenrollment	Summarized enrollment (or attendance) for all activities using the timeslice (accounts for doublebooked and crosslisted classes and events).
totalmaxenrollment	Summarized max enrollment (or max attendance) for all activities using the timeslice (accounts for doublebooked and crosslisted classes and events).

**View Notes:**

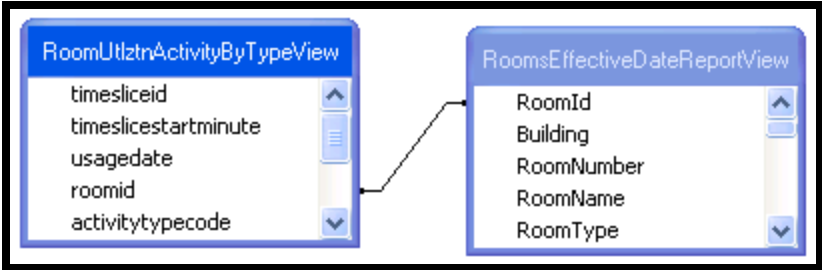
This view is based off of the RoomUsage table. It rolls up all doublebooked and crosslisted activities simultaneously into one activity, adding up their enrollments (attendance) to allow for more accurate space utilization reporting.

While this view rolls up doublebooks of identical types into one row (timeslices for doublebooked or crosslisted sections will only be counted once), this view will include multiple rows if the room is double booked by two different types of activities. Filtering a report to only include academic section activities (activitytypecode = 1) or event activities (activitytypecode = 2) will allow a report to measure room usage for sections or events. For a conflict free look at room usage for all activities, reports should be based on the RoomUtlztnActivityView.

Each activity represented in the RoomUtlztnActivityByTypeView is rounded up to the next thirty minutes (i.e. activities will be written to table utilizing three 10 minute time slices at a time). For example, an event or section meeting from 1:00 pm to 1:50 pm will get SIX rows written to this view, corresponding to time slice id's 78, 79, 80, 81, 82, and 83. While technically only using 50 minutes (and not utilizing timeslice 83, 1:50 pm – 2:00 pm), most institutions would consider that one hour of usage. This also accounts for a section with a Tuesday, Thursday meeting pattern from 10:00 am to 11:15 am. While technically only using 150 minutes (two and a half hours), most institutions would consider that to equal a three hour class. Rounding to the next thirty minutes will account for that.

The time slice methodology allows the delivered utilization reports to count all of the 10 minute time slices used during a given week, and divide by six to generate room hours used. Analyzing time slices used over an entire term (then dividing by six to calculate total hours, then dividing by the number of weeks that were included) allows the calculation of average weekly utilization.

**Join example from the Space Utilization by Building and Room with Seatfill report**



<b>RoomUtilztnActivityView</b>	
<b>Field Name</b>	<b>Notes</b>
timesliceid	Id number associated with the 10 minute timeslice used by an activity. The timeslice id for the 12:00 am to 12:09 am time period is "0". The timeslice id for the 12:10 am to 12:19 am timeslice is "1". The timeslice id values increment every 10 minutes with the timeslice id for the 11:50 pm to 11:59 pm timeslice getting the value of "143".
timeslicestartminute	Corresponding start minute of each timeslice id. Timeslice id "1" starts at 12:10 am and has a start minute of "10". Timeslice id "143" starts at 11:50 pm and has a start minute of "1430".
usagedate	Date on which the activity (timeslice usage) occurs.
roomid	RoomId for the room in which the activity occurs. Without a RoomConfigurationId in this view, a join must be done to the RoomsEffectiveDateReportView on the RoomId. To ensure there is no record duplication, the RoomsEffectiveDateReportView rows should be filtered in the report to only include rows where the IsDefaultConfiguration field is true.
institutionid	When a report is run in Astra Schedule, a parameter called "Institution ID" is passed directly to the report. Utilizing a report parameter in Crystal Reports called "Institution ID", a report can be filtered to only return rows from a single institution when using a multi-institution database.
activitycount	Total number of activities concurrently utilizing the timeslice in each room.
totalenrollment	Summarized enrollment (or attendance) for all activities using the timeslice (accounts for doublebooked and crosslisted classes and events).
totalmaxenrollment	Summarized max enrollment (or max attendance) for all activities using the timeslice (accounts for doublebooked and crosslisted classes and events).

**View Notes:**

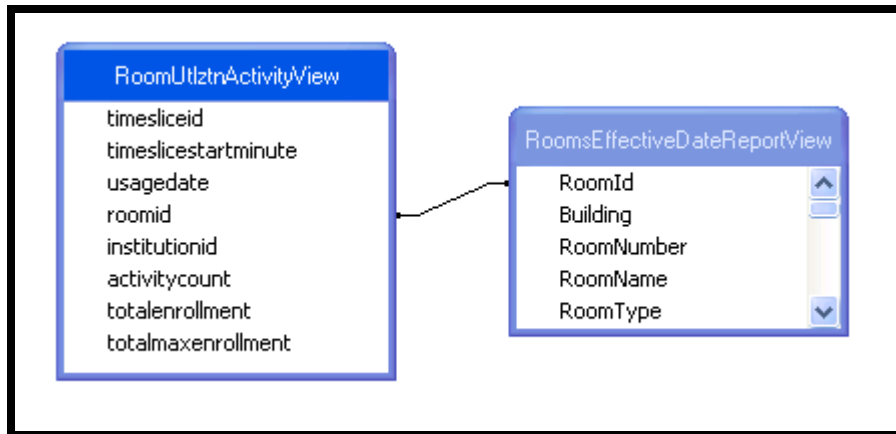
This view is based off of the RoomUsage table. This is the main view used for overall room utilization reporting.

This view rolls up all doublebooked and crosslisted activities simultaneously into one activity, adding up their enrollments (attendance) to allow for more accurate space utilization reporting.

Each activity represented in the RoomUtlztnActivityView is rounded up to the next thirty minutes (i.e. activities will be written to table utilizing three 10 minute time slices at a time). For example, an event or section meeting from 1:00 pm to 1:50 pm will get SIX rows written to this view, corresponding to time slice id's 78, 79, 80, 81, 82, and 83. While technically only using 50 minutes (and not utilizing time slice 83, 1:50 pm – 2:00 pm), most institutions would consider that one hour of usage. This also accounts for a section with a Tuesday, Thursday meeting pattern from 10:00 am to 11:15 am. While technically only using 150 minutes (two and a half hours), most institutions would consider that to equal a three hour class. Rounding to the next thirty minutes will account for that.

The time slice methodology allows the delivered utilization reports to count all of the 10 minute time slices used during a given week, and divide by six to generate room hours used. Analyzing time slices used over an entire term (then dividing by six to calculate total hours, then dividing by the number of weeks that were included) allows the calculation of average weekly utilization.

### **Join example from the Space Utilization for Sections and Events by Building and Room report**



<b>SectionMeetingsCLReportView</b>	
<b>Field Name</b>	<b>Notes</b>
Term	Value comes from the Name field in the Terms table.
Subject	Value comes from the Name field in the Subjects table.
SubjectCode	Value comes from the Subjects table.
CourseNumber	Value comes from the Courses table.
CourseTitle	Value comes from the Courses table.
SectionCode	Value comes from the Sections table.
MeetingType	Value comes from the Names field in the MeetingType table.
DaysMet	Value comes from the DaysMet table.
StartDateRange	Value comes from the StartDate field in the Section Meetings table.
EndDateRange	Value comes from the EndDate field in the Section Meetings table.
StartTime	Start time of the section meeting generated using a formula based on the StartMinute field in the SectionMeetings table.
EndTime	End time of the section meeting generated using a formula based on the StartMinute and Duration fields in the SectionMeetings table.
primaryinstructorid	Value comes from the SectionMeetings table. This is a unique identifier for the instructor and can be joined to the InstructorsReportView to pull in additional instructor information.
InstructorName	This the primary instructor's name created using a formula joining the first and last name from the instructor's record in the People table.
Enrollment	Value comes from the SectionMeetings table. This view uses the crosslist enrollment fields of crosslisted sections and adds up enrollment fields for doublebooked sections with identical meeting patterns.
MaxEnrollment	Value comes from the SectionMeetings table. This view uses the crosslist enrollment fields of crosslisted sections and adds up enrollment fields for doublebooked sections with identical meeting patterns
IsParent	This view marks one of the crosslisted or doublebooked sections of each group with the IsParent flag. All regular, non-crosslisted sections also are marked as parents. This allows reports that look at

	seats offered and class hours to only include records with the IsParent flag set to true, effectively not counting the other pieces of the crosslist or doublebook.
CrosslistName	Contains the Crosslist name from the Crosslists table.
DoNotOptimize	
IsExam	
StartMinute	Integer field corresponding to the minute when the activity begins with 12:01 am getting the value of "1" and 11:59 pm getting the value of "1439".
EndMinute	Integer field corresponding to the minute when the activity ends with 12:01 am getting the value of "1" and 11:59 pm getting the value of "1439".
Duration	
IsArranged	
IsOnline	
RoomConfigurationId	Contains the unique identifier for the specific room configuration used for the event meeting. This field can be joined to the RoomConfigurationId field in the RoomsEffectiveDateReportingView to pull in additional room information.
RoomId	Contains the RoomID of the room used for the event. This field typically should not be used to join back to the RoomsEffectiveDateReportingView because any room with multiple configurations will cause multiple rows with same RoomId, potentially causing record duplication in reports. Joins should be done using the RoomConfigurationId instead.
UsageType	Value comes from the Name field in the UsageType table.
TermName	Value comes from the Name field in the Terms table.
TermType	Value comes from the Name field in the TermTypes table.
TermStartDate	Value comes from the Start Date field in the Terms table.
TermEndDate	Value comes from the End Date field in the Terms table.
CourseDeliveryMethodId	Value comes from the Sections table.
TermId	Unique identifier from the Id field in the Terms table.
SubjectId	Unique identifier from the Id field in the Subjects table.
CourseId	Unique identifier from the Id field in the Courses table.
SectionId	Unique identifier from the Id field in the

	Sections table that can be joined to the RecordId field in the Notes table to pull in Section notes.
SectionMeetingId	Unique identifier from the Id field in the SectionMeetings table that can be joined to the RecordId field in the Notes table to pull in Section Meeting notes.
InstitutionId	When a report is run in Astra Schedule, a parameter called "Institution ID" is passed directly the report. Utilizing a report parameter in Crystal Reports called "Institution ID", a report can be filtered to only return rows from a single institution when using a multi-institution database.
Campus	Value comes from the Name field in the Campuses table.

**View Notes:**

This is an enhanced version of the SectionMeetingsReport view that adds an "is parent" field. This view marks one record for each crosslisted or doublebooked section group (with identical meeting patterns) as the parent, and uses the crosslisted enrollment values (or add up the enrollment values in the case of a double book). All regular, non-crosslisted sections are marked as parent records as well. By filtering a report to only show parent records, the report will only recognize one section for each crosslist and doublebooked group.

<b>SectionMeetingsReportView</b>	
<b>Field Name</b>	<b>Notes</b>
Term	Value comes from the Name field in the Terms table.
Subject	Value comes from the Name field in the Subjects table.
SubjectCode	Value comes from the Subjects table.
CourseNumber	Value comes from the Courses table.
CourseTitle	Value comes from the Courses table.
SectionCode	Value comes from the Sections table.
MeetingType	Value comes from the Names field in the MeetingType table.
DaysMet	Value comes from the DaysMet table.
StartDateRange	Value comes from the StartDate field in the Section Meetings table.
EndDateRange	Value comes from the EndDate field in the Section Meetings table.
StartTime	Start time of the section meeting generated using a formula based on the StartMinute field in the SectionMeetings table.
EndTime	End time of the section meeting generated using a formula based on the StartMinute and Duration fields in the SectionMeetings table.
primaryinstructorid	Value comes from the SectionMeetings table. This is a unique identifier for the instructor and can be joined to the InstructorsReportView to pull in additional instructor information.
InstructorName	This the primary instructor's name created using a formula joining the first and last name from the instructor's record in the People table.
Enrollment	Value comes from the SectionMeetings table.
MaxEnrollment	Value comes from the SectionMeetings table.
DoNotOptimize	Value comes from the Sections table.
IsExam	Value comes from the MeetingType table.
StartMinute	Integer field corresponding to the minute when the activity begins with 12:01 am getting the value of "1" and 11:59 pm getting the value of "1439".
EndMinute	Integer field corresponding to the minute when the activity ends with 12:01 am getting the value of "1" and 11:59 pm getting the value of "1439".
Duration	Value comes from the SectionMeetings table.
IsArranged	Value comes from the SectionMeetings table.
IsOnline	Value comes from the SectionMeetings table.
RoomConfigurationId	Contains the unique identifier for the specific room configuration used for the event

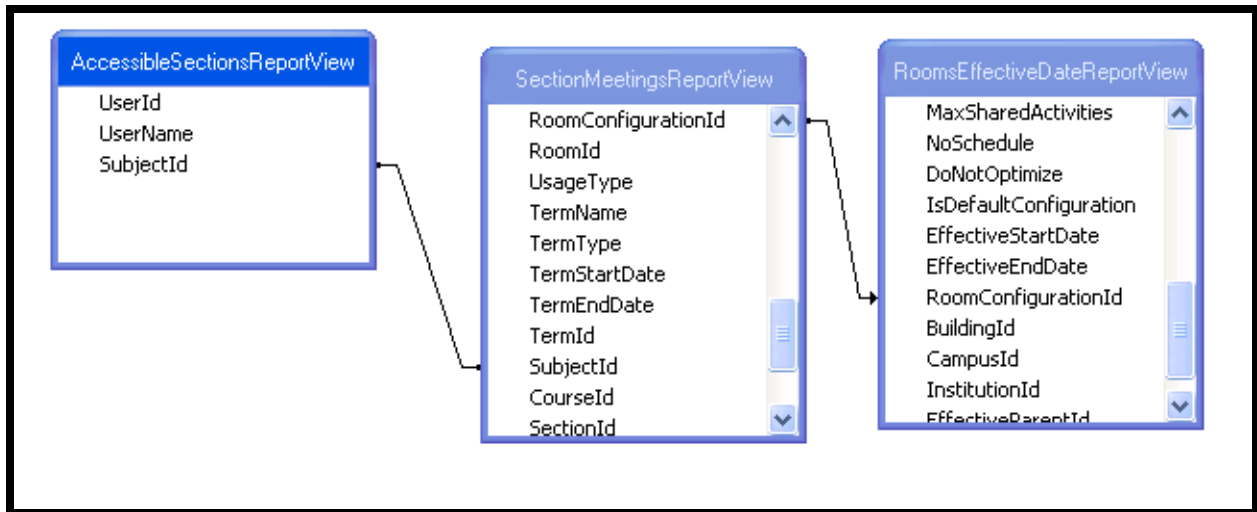


	meeting. This field can be joined to the RoomConfigurationId field in the RoomsEffectiveDateReportingView to pull in additional room information.
RoomId	Contains the RoomID of the room used for the event. This field typically should not be used to join back to the RoomsEffectiveDateReportingView because any room with multiple configurations will cause multiple rows with same RoomId, potentially causing record duplication in reports. Joins should be done using the RoomConfigurationId instead.
UsageType	Value comes from the Name field in the UsageType table.
TermName	Value comes from the Name field in the Terms table.
TermType	Value comes from the Name field in the TermTypes table.
TermStartDate	Value comes from the Start Date field in the Terms table.
TermEndDate	Value comes from the End Date field in the Terms table.
CourseDeliveryMethodId	Value comes from the Sections table.
TermId	Unique identifier from the Id field in the Terms table.
SubjectId	Unique identifier from the Id field in the Subjects table.
CourseId	Unique identifier from the Id field in the Courses table.
SectionId	Unique identifier from the Id field in the Sections table that can be joined to the RecordId field in the Notes table to pull in Section notes.
SectionMeetingId	Unique identifier from the Id field in the SectionMeetings table that can be joined to the RecordId field in the Notes table to pull in Section Meeting notes.
InstitutionId	When a report is run in Astra Schedule, a parameter called "Institution ID" is passed directly to the report. Utilizing a report parameter in Crystal Reports called "Institution ID", a report can be filtered to only return rows from a single institution when using a multi-institution database.
Campus	Value comes from the Name field in the Campuses table.

### View Notes:

The SectionMeetingsReportView is the main academic section reporting view containing information on academic sections. The key identifier fields such as the SectionId, SectionMeetingId, RoomConfigurationId, and PrimaryInstructorId allow this view to be joined other tables and views to bring in additional information.

### Join example from the Sections by Building and Room for Selected Term report



<b>UserPermissionsReportView</b>	
<b>Field Name</b>	<b>Notes</b>
InstitutionId	When a report is run in Astra Schedule, a parameter called "Institution ID" is passed directly to the report. Utilizing a report parameter in Crystal Reports called "Institution ID", a report can be filtered to only return rows from a single institution when using a multi-institution database.
UserName	Value comes from the Users table.
Name	Users name built from the FirstName and LastName fields in the Users table.
Role	Value comes from the Name field in the Roles table.
Permission	Specific user permission that comes from the Name field in the Permissions table.
RoleProfileGroup	Value generated from subquery that pulls values from the UserProfilesGroup table.
Profile	
ProfileItemType	
ProfileItem	

**View Notes:**

Contains information on user permissions associated with each Astra user.